

Colour code according to DIN VDE 0293¹⁾ (old)

Multicore flexible cables

Number of cores	Cores with green-yellow protective conductor (-J)	Cores without green-yellow protective conductor (-O)
2	–	brown/blue
3	green-yellow/brown/blue	black/blue/brown
4	green-yellow/black/blue/brown	black/blue/brown/black
5	green-yellow/black/blue/brown/black	black/blue/brown/black/black
6 and more	green-yellow/others black with white numbering	black with white numbering

Multicore cables for fixed installation

Number of cores	Cores with green-yellow protective conductor (-J)	Cores without green-yellow protective conductor (-O)	with protective conductor
2	green-yellow/black*	black/blue	black/blue
3	green-yellow/black/blue	black/blue/brown	black/blue/brown
4	green-yellow/black/blue/brown	black/blue/brown/black	black/blue/brown/black
5	green-yellow/black/blue/brown/black	black/blue/brown/black/black	–
6 and more	green-yellow/others black with white numbering	black with numbering	black with numbering

* This type is according to DIN VDE 0100 part 540, table 2 valid only for copper cross-section of 10 mm² and more or Alu 16 mm².

Colour code according to DIN VDE 0293-308²⁾ (new)

Number of cores	Cores with green-yellow protective conductor (-J)	Cores without green-yellow protective conductor (-O)
2	–	brown/blue
3	green-yellow/brown/blue	brown/black/grey
3 ³⁾	–	blue/brown/black
4	green-yellow/brown/black/grey	blue/brown/black/grey
4 ³⁾	green-yellow/blue/brown/black	–
5	green-yellow/blue/brown/black/grey	blue/brown/black/grey/black
6 and more	green-yellow/others black with white numbering	black with white numbering

¹⁾ Coding in accordance with VDE 0293: 1990-01 / transitional periods until 1 April 2006, beyond that only the coding for 6 or more conductors will continue to exist.

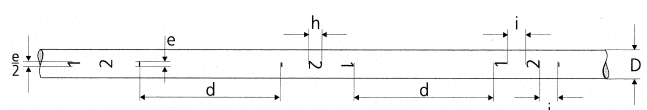
²⁾ Coding in accordance with VDE 0293-308 (valid as of 1 January 2003).

³⁾ Only for certain applications.

Core marking with numbering (in direction to longitudinal axis)

Height and gap of numbers

Core-nominal- \varnothing mm	e*) mm	h mm	i mm	d mm
$D \leq 2,4$	$\geq 0,6$	$\geq 2,3$	ca. 2	≤ 50
$2,4 < D \leq 5,0$	$\geq 1,2$	$\geq 3,2$	ca. 3	≤ 50
$5,0 < D$	$\geq 1,6$	$\geq 4,6$	ca. 4	≤ 50



e: breadth of number
h: height of number
i: gap between two successive numbers and between number and dash
d: gap between two successive numbers

*) when the number is only 1, the smallest breadth is half of the given dimension to this column.